



IN THIS ISSUE:

- [Message From the Director](#)
- [Agents Corner](#)
- [Tailgate 2021](#)
- [What's That Bug?](#)
- [Soybean Update](#)
- [Herbicide Resistance](#)
- [Field Day Feedback](#)
- [Plant Pathologist Position](#)
- [Research Spec. Sr, Weed Science Position](#)
- [Contact Us](#)

The Stalk

VOLUME II ISSUE IX

SEPTEMBER 2021



From The Director

We are staying busy at the Eastern Shore AREC with programming, helping diagnose crop production issues, our research field day, and are now gearing up for fall harvest. We thank our sponsors and everyone that made field day such a success. It was nice seeing people in-person again, and we hope to continue in-person programming this fall and winter. If you missed the *Special Edition of The Stalk*, please take a few minutes to answer our field day survey either *online* or by filling out the form on page 6 and sending back to us. In late August, we also hosted a tour of the Eastern Shore for the Virginia Association of Agricultural Extension Agents (VAAEA). Thank you to all the farms and businesses that allowed us to visit with you to show Extension agents from around Virginia what the Eastern Shore has to offer (see *page 4* for photos). We continue to search for a Research Specialist to assist our weed science program at the Eastern Shore AREC. See that job posting for more information if you or someone you know are interested in working with us! We are also happy to announce that we are starting our search for a Plant Pathologist faculty position to be housed on the Eastern Shore. Please keep an eye out for stakeholder meetings to meet our candidates, listen to their plans, to ask them

tough questions, and help us select our new plant pathologist. The plant pathology search is open now, and we will review applications and invite candidates for an interview after November 15, 2021. As always, we hope you are doing well, that you have high yields with excellent quality, and let us know how we can help you!

— Mark



Agents Corner

Northampton Co. Ag Fair and Accomack Co. Farm Tour Canceled

It was our hope that the effects of COVID-19 had skirted by the Eastern Shore and we would be having normal fall programs this year, however we were not that lucky. With the surge in the Delta variant cases, the Northampton County Ag Fair and the Accomack County Farm Tour, two big fall events, have been canceled out of COVID concerns for 2021. We hope to bring both of those programs back in 2022. We are pushing forward to plan the 2022 Eastern Shore Ag Conference on January 26th & 27th 2022 in collaboration with the Association of Potato and Vegetable Growers. As of right now, we are cautiously optimistic that the event will occur as it has in the past and are planning a great program that can be converted to a virtual format if needed. In November, when we have a clearer picture of where we are with COVID-19 on the Eastern Shore, we plan to send out information to vendors and conference sponsors so be on the lookout.



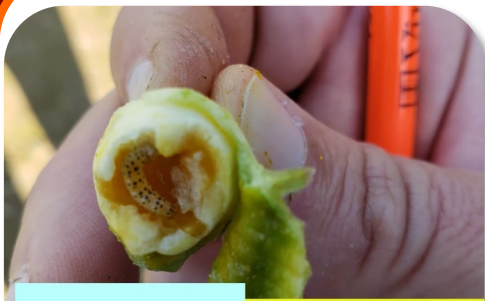
Wanda & Theresa



WATCH PARTY SAVE THE DATE!



The Eastern Shore AREC and the Eastern Shore Chapter of the Virginia Tech Alumni Association are tentatively planning our first tailgate event since 2017! We are still working out some details, but mark your calendars for October 16th to watch VT take on Pitt at the ESAREC!



WHAT'S THAT BUG?

The Entomology Department at the Eastern Shore AREC invites you enter September's "What's That Bug?" contest. Email responses to hdoughty@vt.edu for your chance to win a prize!

*Quick tip, you can also email Hélène pictures of your field or garden pests to identify!

JULY'S BUG



Did you guess a Eastern Hercules beetle? Click [here](#) to learn more!

Soybean Insect & Disease Update

Three cornered alfalfa hopper and Sudden Death Syndrome detected on the Eastern Shore

Hélène B. Doughty

"The 3CAH insect can be difficult to manage and symptoms (e.g., stem girdles, lodging and breaking at the soil surface) appear later in the season when no remediation is possible."

We have received soybean samples that indicate three cornered alfalfa hopper (3CAH) feeding in Eastern Shore fields. The 3CAH insect can be difficult to manage and symptoms (e.g., stem girdles, lodging and breaking at the soil surface) appear later in the season when no remediation is possible.

Symptoms are more severe on the edges of fields. The damage is caused by feeding on seedlings, leading to girdling of the stem, and creating a callus at the stalk base; which is susceptible to breaking. According to Dr. Sally Taylor at Tidewater AREC (TAREC), double crop soybeans may experience higher pressure because 3CAH populations were coming out of the previous wheat crop. Scouting is difficult and unproductive as adults are highly mobile and migrate throughout the year, based on one of Taylor's study. Increasing the soybean planting rate per acre will counter the loss of plants as well as mowing weedy borders to reduce 3CAH overwintering sites.



We have also received samples, remotely diagnosed by Dr. Steve Rideout, as soybean sudden death syndrome (SDS). Symptoms include yellow and brown spots on the leaves, veins remaining green, with root discoloration, late in plant growth. Dr. Rideout indicated that crop rotation will help in preventing SDS as it stems from a soilborne fungus. No fungicide can be applied when SDS is detected.

Are you facing challenges in controlling weeds and suspect herbicide-resistance issues?

If the answer is yes, please mail or drop off mature seedheads of escaped plants with information of crop field, name of grower, phone number and address. The Weed Science team will screen weeds for herbicide-resistance, and provide information on alternate control methods by spring.

Contact: Vijay Singh, v.singh@vt.edu, (W) 757/807-6579, (C) 479/713-0094

Field Day Feedback



We thank everyone who has provided feedback from the Special Field Day edition of The Stalk. If you have not done so already, please give us your opinions to make to make the event an even bigger success in the future. Please click the anonymous survey below or scan the QR Code : https://virginiatech.qualtrics.com/jfe/form/SV_8pKHa1fnDfeIb8q. Your participation is greatly appreciated.



Plant Pathologist Position Approved

We are pleased to announce that the recruitment process will begin this week for the Plant Pathologist position. As we move through the process, we will keep you posted on candidate interviews and welcome your participation and feedback.

Research Specialist Sr - Weed Science Update

The position of Research Specialist Sr has been updated and recruitment will start over early next week. Please encourage qualified friends and neighbors to apply to assist our weed science team!

Virginia Association of Agricultural Extension Agents (VAAEA) Tour Highlights





Eastern Shore Agricultural Research and Extension Center

33446 Research Dr.

Painter, VA 23420

Phone: 757-807-6586

<https://www.arec.vaes.vt.edu/arec/eastern-shore.html>

The Virginia Tech, Eastern Shore AREC is committed to supporting commercial vegetable, grain, oilseed, and fiber production throughout the Commonwealth of Virginia. Centrally located on Virginia's Eastern Shore, the center conducts basic and applied research on more than 25 agricultural crops.

If you are a person with a disability and desire any assistive devices, services or other accommodations to participate in any activity, please contact Lauren Seltzer at 757-807-6586* (*TDD number is (800) 828-1120) during business hours of 7:30 a.m. and 4:00 p.m. to discuss accommodations.



ESAREC & VCE Contact Information

ESAREC Faculty	Email	Work Phone	Cell Phone	Title
Mark S. Reiter	mreiter@vt.edu	757/807-6576	757/693-2556	Director/Professor, Soils & Nutrient Management
Vijay Singh	v.singh@vt.edu	757/807-6579	479/713-0094	Assistant Professor, Weed Science
Emmanuel Torres	etorres@vt.edu		352/682-0708	Assistant Professor, Horticulture
Lorena Lopez	lorellopezq257@vt.edu		954/529-9042	Postdoctoral Associate, Entomology
ESAREC Staff	Email	Phone		Title
James Custis	jcustis@vt.edu	757/807-6596		Farm Manager
Hélène Doughty	hdoughty@vt.edu	757/807-6592	757/999-0780	Research Specialist, Entomology
Andrew Fletcher	alf20007@vt.edu	757-807-6596		Assistant Farm Manager
John Mason	masonje@vt.edu	757/807-6582		Research Specialist, Soils & Nutrient Management
Lauren Peyton Seltzer	mlpeyton@vt.edu	757/807-6586	757/710-5701	Executive Secretary Sr.
Joy Zuchel	jzuchel@vt.edu	757/807-6583	757/710-1761	Research Specialist, Horticulture
Ursula Deitch	ursula@vt.edu	757/678-7946	16392 Courthouse Road Eastville, VA 23347	ANR Agent, Northampton County
Theresa Pittman	tpittman@vt.edu	757/787-1361	23185 Front Street Accomac, VA 23301	ANR Agent, Accomack County

Virginia Cooperative Extension programs and employment are open to all, regardless of age, color, disability, gender, gender identity, gender expression, national origin, political affiliation, race, religion, sexual orientation, genetic information, veteran status, or any other basis protected by law. An equal opportunity/affirmative action employer. Issued in furtherance of Cooperative Extension work, Virginia Polytechnic Institute and State University, Virginia State University, and the U.S. Department of Agriculture cooperating. Edwin J. Jones, Director, Virginia Cooperative Extension, Virginia Tech, Blacksburg, VA 24061, United States; M. Ray McKinnie, Administrator, 1890 Extension Program, Virginia State University, Petersburg, VA, United States.



VIRGINIA AGRICULTURAL EXPERIMENT STATION
EASTERN SHORE AGRICULTURAL
RESEARCH AND EXTENSION CENTER
VIRGINIA TECH.



Eastern Shore AREC Field Day Survey

My preferred month and date of field day would be (i.e. July 15):

I prefer:

- a. One “track” with everyone together and more attendees per stop
- b. Two “tracks” with people split based on interest and fewer people per stop

Number of acres I farm, crop consult, or impact:

I am (check all that apply):

- Farmer
- Industry
- Government/Extension/SWCD
- Homeowner/Gardener
- Student

I am most interested in seeing the following types of stops:

If you were unable to attend the 2021 Field Day, please provide us with feedback to encourage greater attendance in the future.