

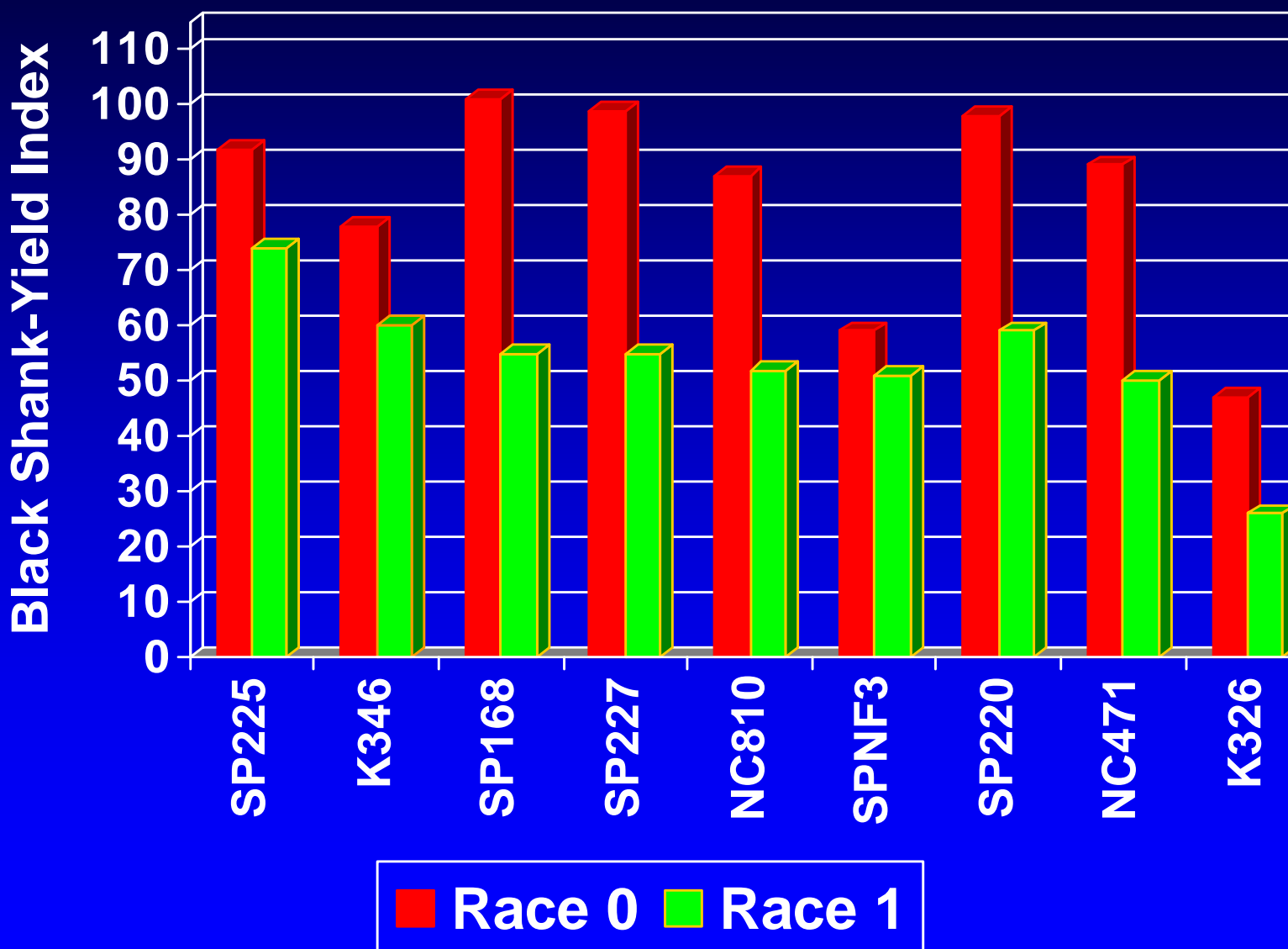
As you look at these ratings & select a black shank-resistant tobacco variety, remember:

- “Race 1” black shank will “predominate” over “race 0” in fields where varieties possessing the *Ph* gene have been grown.
- Ratings were calculated from results in multiple field experiments over multiple years.
- “% Survival” = the % of the original plant stand remaining in untreated soil at ~ 2nd harvest.
- “Black Shank-Yield Index” = relative yield from 2006 & 2007 variety tests in Virginia weighted by % Survival.
- A “Black Shank-Yield Index = 100” means a yield equal to the average yield in the 2006 & 2007 variety tests without disease.

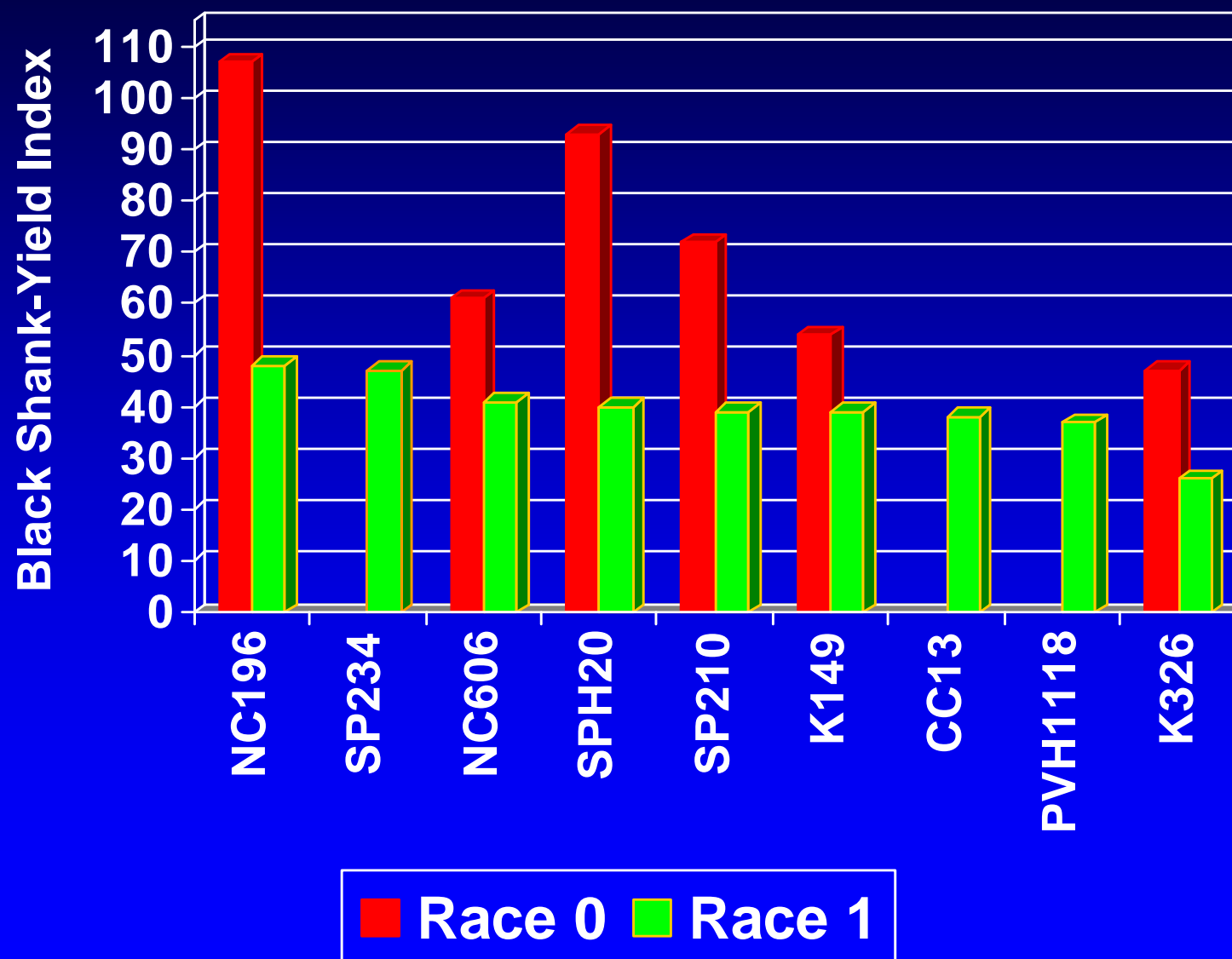
Flue-Cured Tobacco Varieties in 2008 that possess the *Ph* gene for Black Shank Resistance

CC 27	NC 196	NC 810	SP 225
CC 37	NC 291	PVH 1118	SP 227
NC 71	NC 297	RG H51	SP 234
NC 72	NC 299	SP 168	SP H20
NC 102	NC 471	SP 220	SP NF3

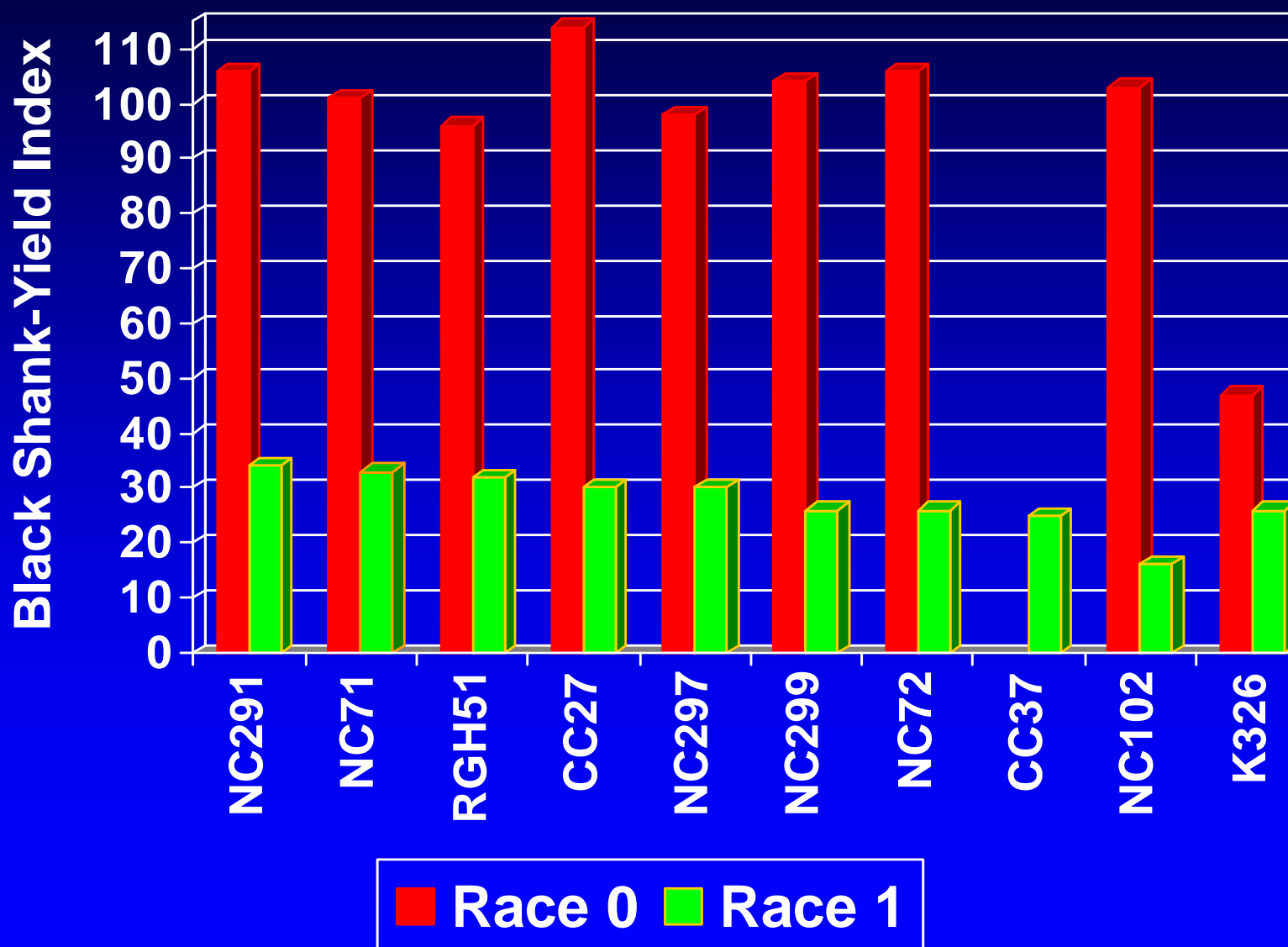
2008 Flue-Cured Tobacco Black Shank Resistance Ratings



2008 Flue-Cured Tobacco Black Shank Resistance Ratings

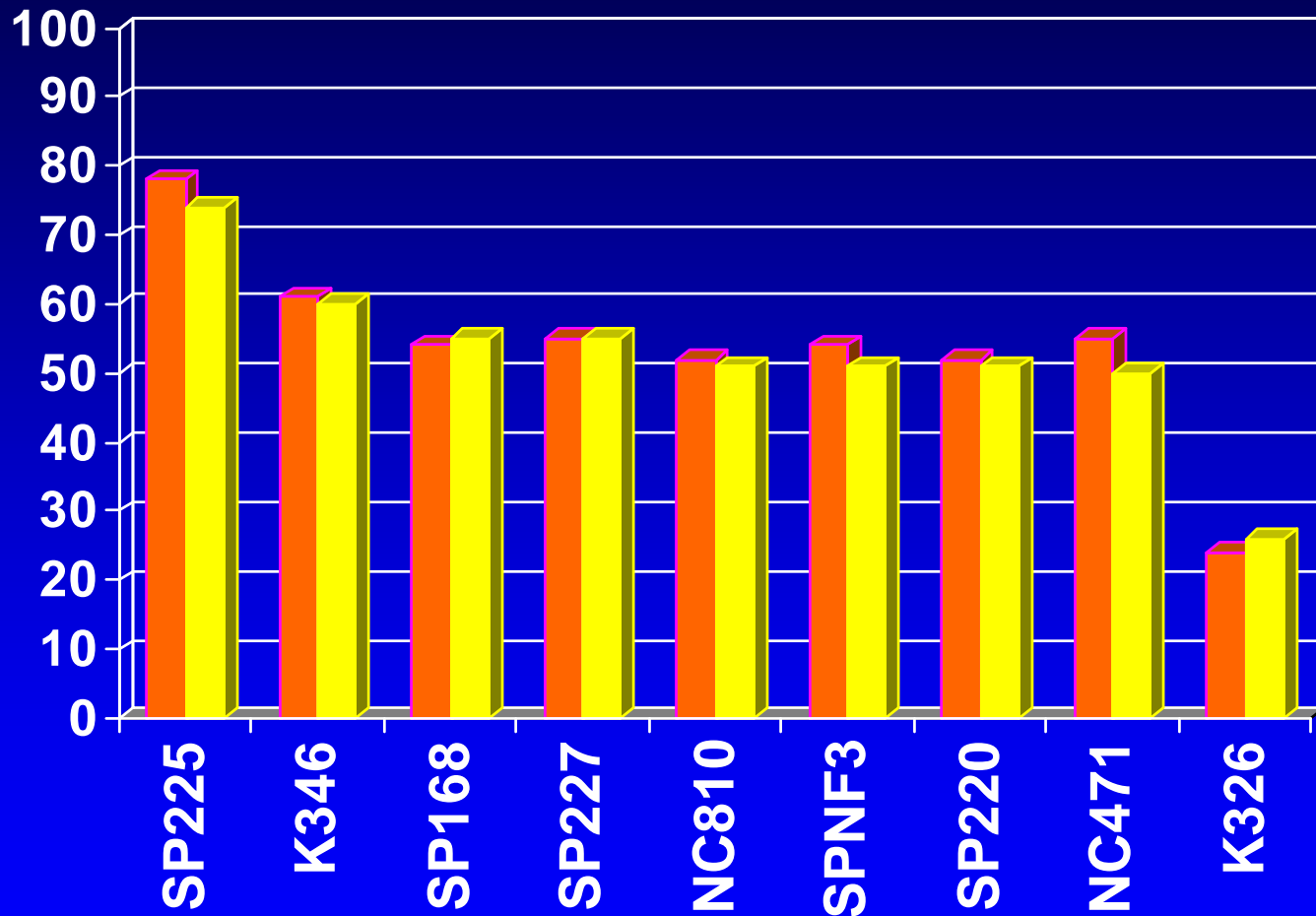


2008 Flue-Cured Tobacco Black Shank Resistance Ratings



2008 Flue-Cured Tobacco Black Shank Resistance

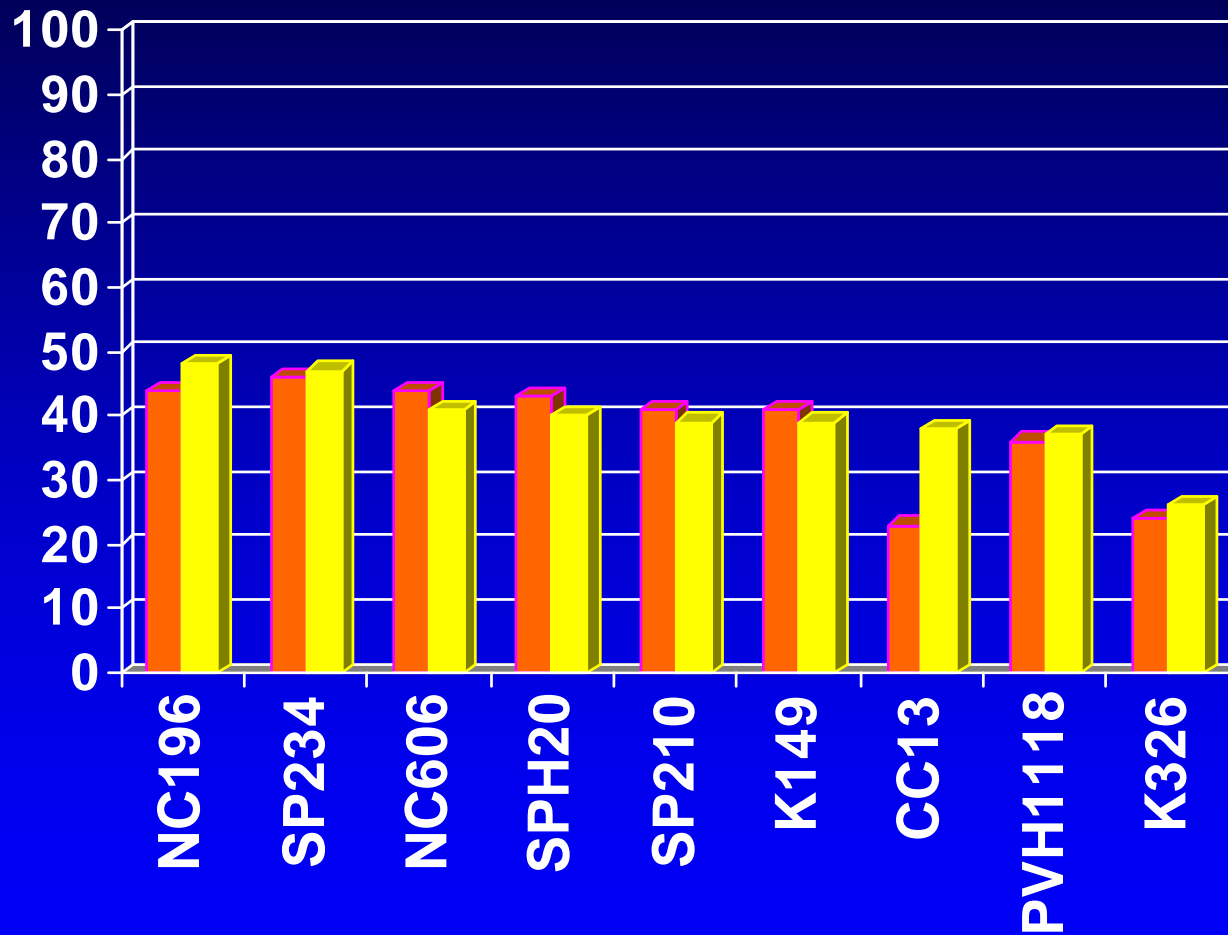
(Race 1 ONLY)



■ % Survival only ■ Black Shank-Yield Index

2008 Flue-Cured Tobacco Black Shank Resistance

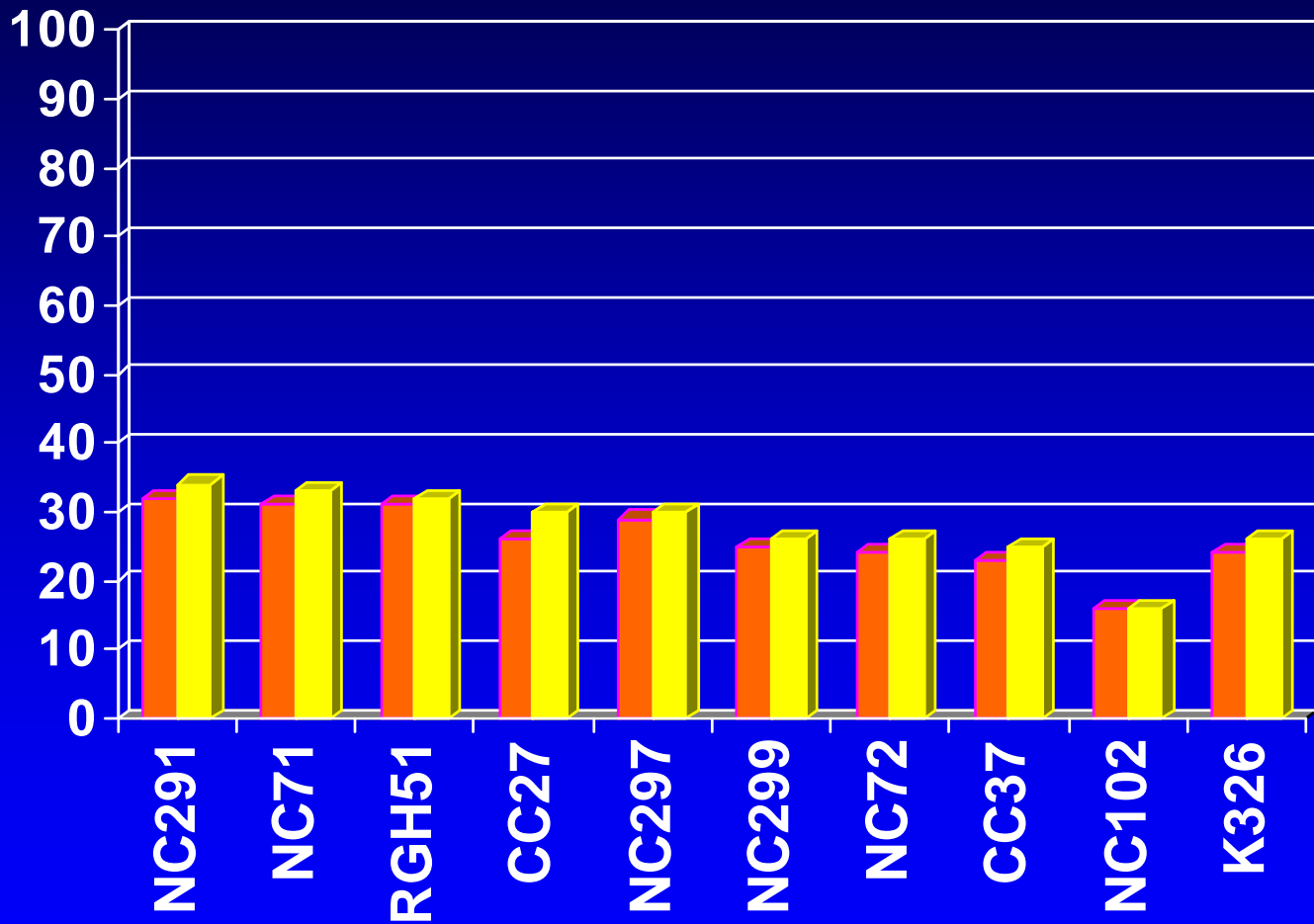
(Race 1 ONLY)



■ % Survival only ■ Black Shank-Yield Index

2008 Flue-Cured Tobacco Black Shank Resistance

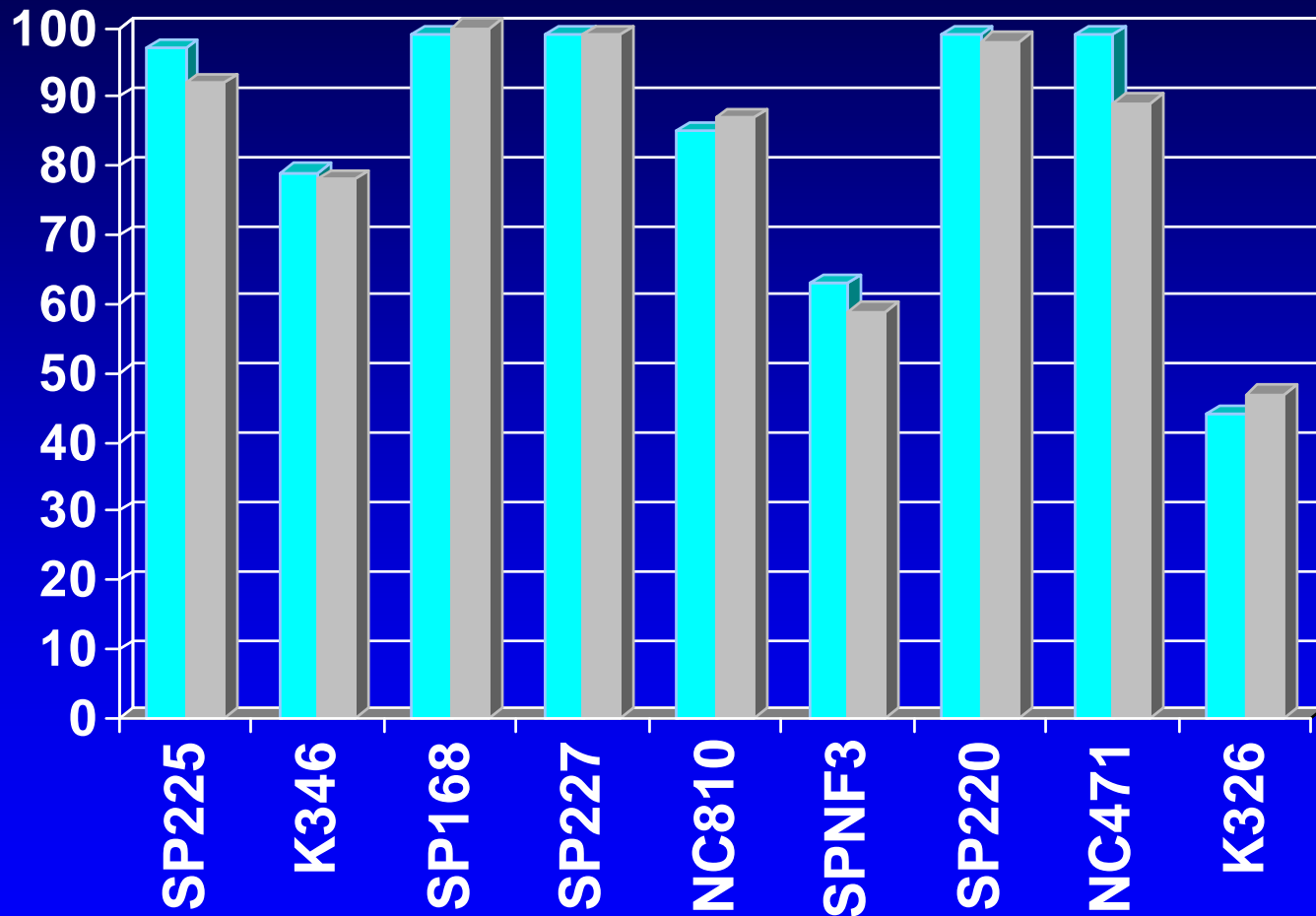
(Race 1 ONLY)



■ % Survival only ■ Black Shank-Yield Index

2008 Flue-Cured Tobacco Black Shank Resistance

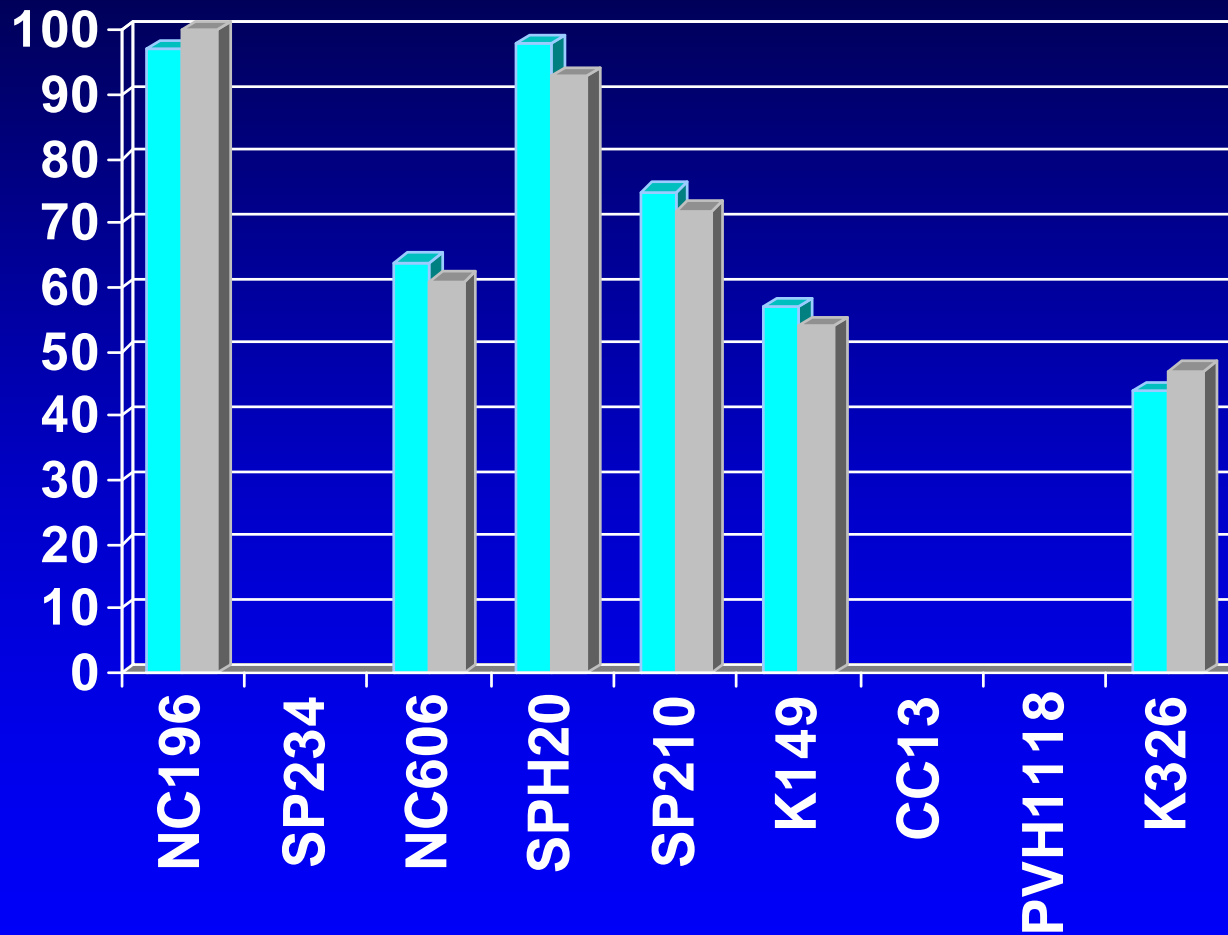
(Race 0 ONLY)



■ % Survival only ■ Black Shank-Yield Index

2008 Flue-Cured Tobacco Black Shank Resistance

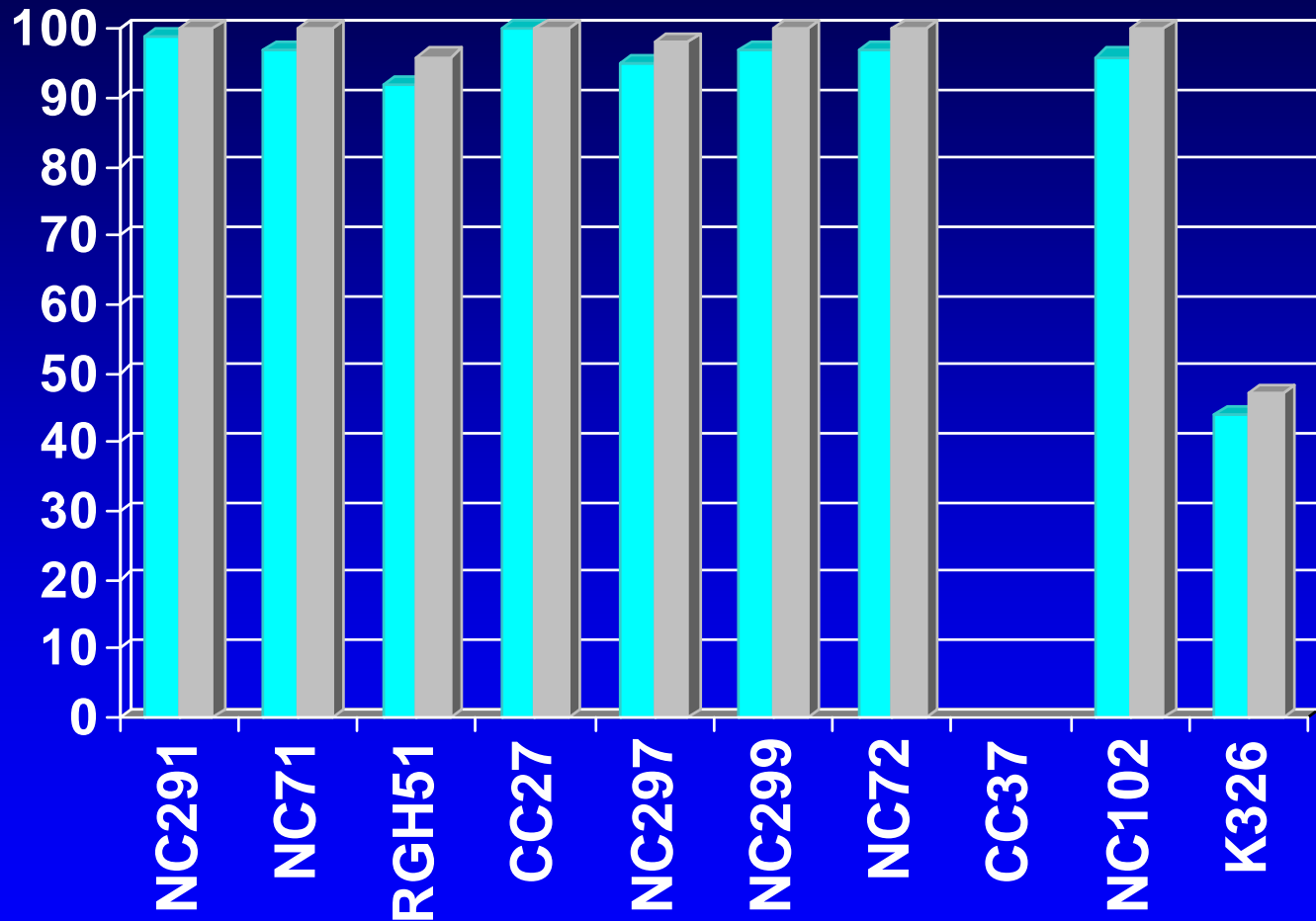
(Race 0 ONLY)



■ % Survival only ■ Black Shank-Yield Index

2008 Flue-Cured Tobacco Black Shank Resistance

(Race 0 ONLY)



■ % Survival only ■ Black Shank-Yield Index